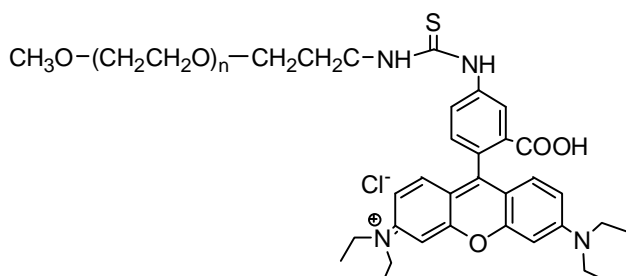


TECHNICAL DATA SHEET**Rhodamine B PEG, MW 1000, 2000, 5000, 10k, 20k, 30k.**

Catalog Numbers: PG1-RB-1k, 2k, 5k, 10k, 20k, 30k, 40k.

Description:

Nanocs' **Rhodamine B PEG** (mPEG-RB) is a monosubstituted red fluorescent PEG dye. Rhodamine B has excitation/emission wavelength at around ~544 nm/~576 nm and it gives bright red fluorescent light upon excited at 544 nm. Compared to other organic dyes, our fluorescent PEG dyes are brighter, more stable and easier to use. These PEG dyes are readily soluble in water. All bioassays, labeling or conjugation reactions can be carried out directly in aqueous solution without need adding any organic solvents.

Product Structure:**Product Specifications:**

- Composition: **MPEG Rhodamine B.**
- Appearance: Pink/dark red solid, semi-solid depends on molecular weight.
- Solubility: Soluble in water, ethanol, chloroform, DMSO, etc.
- Ex/Em wavelength: 544 nm/576 nm.

Handling and Use:

Rhodamine B PEG is sensitive to light and temperature. For best use, material should always be kept in low temperature in dry condition. Protect from

light. Avoid frequent thaw and freezing. For more information about using this product, visit www.nanocs.net.

Storage Conditions:

mPEG Rhodamine should be stored at $-20\text{ }^{\circ}\text{C}$. Protect from light. Materials may be handled under inert gas for best stability. Re-test material after 6 months.

This product is for research use only and is not intended for use in humans or for diagnostic use.

Related Products:

Rhodamine PEG NHS
Rhodamine PEG Biotin
Rhodamine PEG Azide

Rhodamine PEG COOH
Rhodamine PEG Maleimide
Rhodamine PEG DBCO

To Order:Order online: www.nanocs.netOrder by Email: sales@nanocs.com

Order by phone: 1(800) 388-4221; 1(888) 908-8803

For more information, visit www.nanocs.net