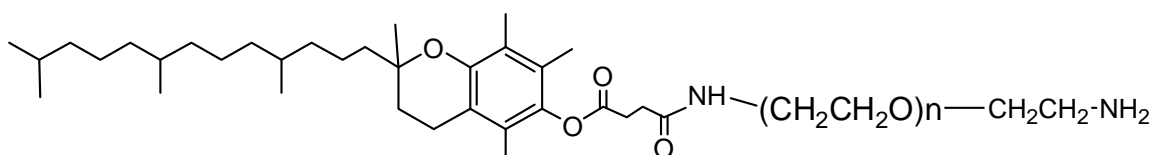


**TECHNICAL DATA SHEET****Vitamin E PEG amine, MW 1000**

Catalog#: PG2-AMVE-1k

**Product Structure:****Product Specifications:**

- Molecular composition: Vitamin E PEG1000 amine.
- Appearance (form): Solid/semi-solid powder.
- Appearance (color): Off-white.
- Solubility: 5 mg/mL, clear in warm water and chloroform.
- Amine identity: Ninhydrin test, positive.

**Storage Conditions:**

Vitamin E PEG amine should be stored at -20 °C. Desiccate. Avoid frequent thaw and freeze.

**Handling and Use:**

For best use, **Vitamin E PEG amine** should always be kept at low temperature in dry condition. Prepare fresh solution right before use. Avoid frequent thaw and freezing. For more information about using this product, visit [www.nanocs.net](http://www.nanocs.net).

**This product is for research use only.**

The information given in this document is to the best of our knowledge accurate, but no warranty is expressed or implied. It is the user's responsibility to determine the suitability for their own use of the products described herein, and since conditions of use are beyond our control, we disclaim all liability with respect to the use of any material supplied by us. Nothing contained herein shall be construed as a recommendation to use any product or to practice any process in violation of any law or any government regulation.