

**TECHNICAL DATA SHEET**

## Cholesterol PEG Thiol, MW 1k, 2k, 3400, 5k, 10k, 20k

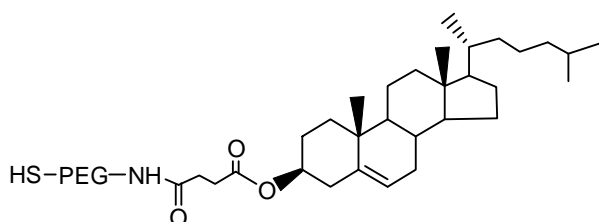
Catalog Numbers: PG2-CSTH-1k, 2k, 3k, 5k, 10k, 20k.

Synonym: Cholesteryl PEG Thiol, Thiol PEG Cholesterol, Cholesterol PEG SH

### Description:

**Thiol PEG Cholesterol** is one of Nanocs' thiol functional cholesterol PEG derivatives. Cholesterol is an essential lipid component to build and maintain basic animal cell function. It is one of animal cell-membrane structure components and establishes proper membrane permeability and fluidity in animal cells. In addition to its structural function, cholesterol is also the important precursor for the biosynthesis of steroid hormones, bile acids and vitamin D. Cholesterol is a hydrophobic molecule with very low water solubility. **Thiol** functional cholesterol PEG derivative is able to react with a number of thiol reactive groups such as **maleimide**, **pyridyldisulfide**, etc. It can also bind to gold and many other metal surfaces with high affinity. **Cholesterol PEGs** offered by Nanocs have good water solubility, flexible linker structure and diverse functionalities. Our Cholesterol PEG derivatives have been used successfully in cell membrane imaging, liposome formulation and drug delivery. As a leading PEG cholesterol provider, Nanocs now offers a variety of multifunctional PEG cholesterol molecules for different applications.

### Product Structure:



### Product Specifications:

- Composition: **Cholesterol PEG Thiol.**
- Appearance: White/off-white solid, semi-solid depends on molecular weight.
- Solubility: 10 mg/mL, clear in water, chloroform, DMSO.
- Function group: Cholesterol.

### Handling and Use:

**Cholesteryl PEG Thiol** is sensitive to moisture and temperature. For best use, material should always be kept in low temperature in dry condition. Prepare fresh solution right before use. Avoid frequent thaw and freezing. For more information about using this product, visit [www.nanocs.net](http://www.nanocs.net).

### Storage Conditions:

**Thiol PEG Cholesterol** should be stored at -20 °C. Desiccate. Materials may be handled under inert gas for best stability. Re-test material after 6 months.

**This product is for research use only and is not intended for use in humans or for diagnostic use.**

### Related Products:

Cholesterol PEG NHS	Cholesterol PEG FITC
Cholesterol PEG DBCO	Cholesterol PEG Azide
Cholesterol PEG Biotin	Cholesterol PEG Amine
Cholesterol PEG Maleimide	

### To Order:

Order online: [www.nanocs.net](http://www.nanocs.net)

Order by Email: [sales@nanocs.com](mailto:sales@nanocs.com)

Order by phone: 1(800) 388-4221; 1(888) 908-8803

For more information, visit [www.nanocs.net](http://www.nanocs.net)