

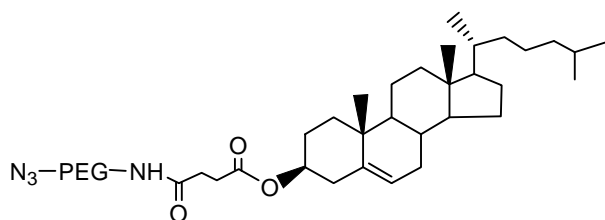
TECHNICAL DATA SHEET**Cholesterol PEG Azide, MW 600, 1k, 2k, 3400, 5k, 10k, 20k**

Catalog Numbers: PG2-AZCS-600, 1k, 2k, 3k, 5k, 10k, 20k.

Synonym: Cholesteryl PEG azide, Azido PEG Cholesterol, Azide PEG Cholesterol

Description:

Azide PEG Cholesterol is one of Nanocs' reactive Cholesterol PEG derivatives that can react with **alkyne** groups. Cholesterol is an essential lipid component to build and maintain basic animal cell function. It is one of animal cell-membrane structure components and establishes proper membrane permeability and fluidity in animal cells. In addition to its structural function, cholesterol is also the important precursor for the biosynthesis of steroid hormones, bile acids and vitamin D. Cholesterol is a hydrophobic molecule with very low water solubility. **Azide** functionalized cholesterol PEG can be used in '**Click Chemistry**' to react with linear alkyne via copper catalyst or with DBCO without any catalyst. **Cholesterol PEGs** offered by Nanocs have good water solubility, flexible linker structure and diverse functionalities. Our Cholesterol PEG derivatives have been used successfully in cell membrane imaging, liposome formulation and drug delivery. As a leading PEG cholesterol provider, Nanocs now offers a variety of multifunctional PEG cholesterol molecules for different applications.

Product Structure:**Product Specifications:**

- Composition: **Cholesterol PEG Azide**
- Appearance: White/off-white solid, semi-solid depends on molecular weight.
- Solubility: 10 mg/mL, clear in water, chloroform, DMSO.
- Functional group: Cholesterol.
- Reactive group: Azide.

Handling and Use:

Cholesteryl PEG Azide is sensitive to moisture and temperature. For best use, material should always be kept in low temperature in dry condition. Prepare fresh solution right before use. Avoid frequent thaw and freezing. For more information about using this product, visit www.nanocs.net.

Storage Conditions:

Azido PEG Cholesterol should be stored at -20 °C. Desiccate. Materials may be handled under inert gas for best stability. Re-test material after 6 months.

This product is for research use only and is not intended for use in humans or for diagnostic use.

Related Products:

Cholesterol PEG NHS	Cholesterol PEG FITC
Cholesterol PEG DBCO	Cholesterol PEG Biotin
Cholesterol PEG COOH	Cholesterol PEG Amine
Cholesterol PEG Maleimide	

To Order:Order online: www.nanocs.netOrder by Email: sales@nanocs.com

Order by phone: 1(800) 388-4221; 1(888) 908-8803

For more information, visit www.nanocs.net

The information given in this document is to the best of our knowledge accurate, but no warranty is expressed or implied. It is the user's responsibility to determine the suitability for their own use of the products described herein, and since conditions of use are beyond our control, we disclaim all liability with respect to the use of any material supplied by us. Nothing contained herein shall be construed as a recommendation to use any product or to practice any process in violation of any law or any government regulation.